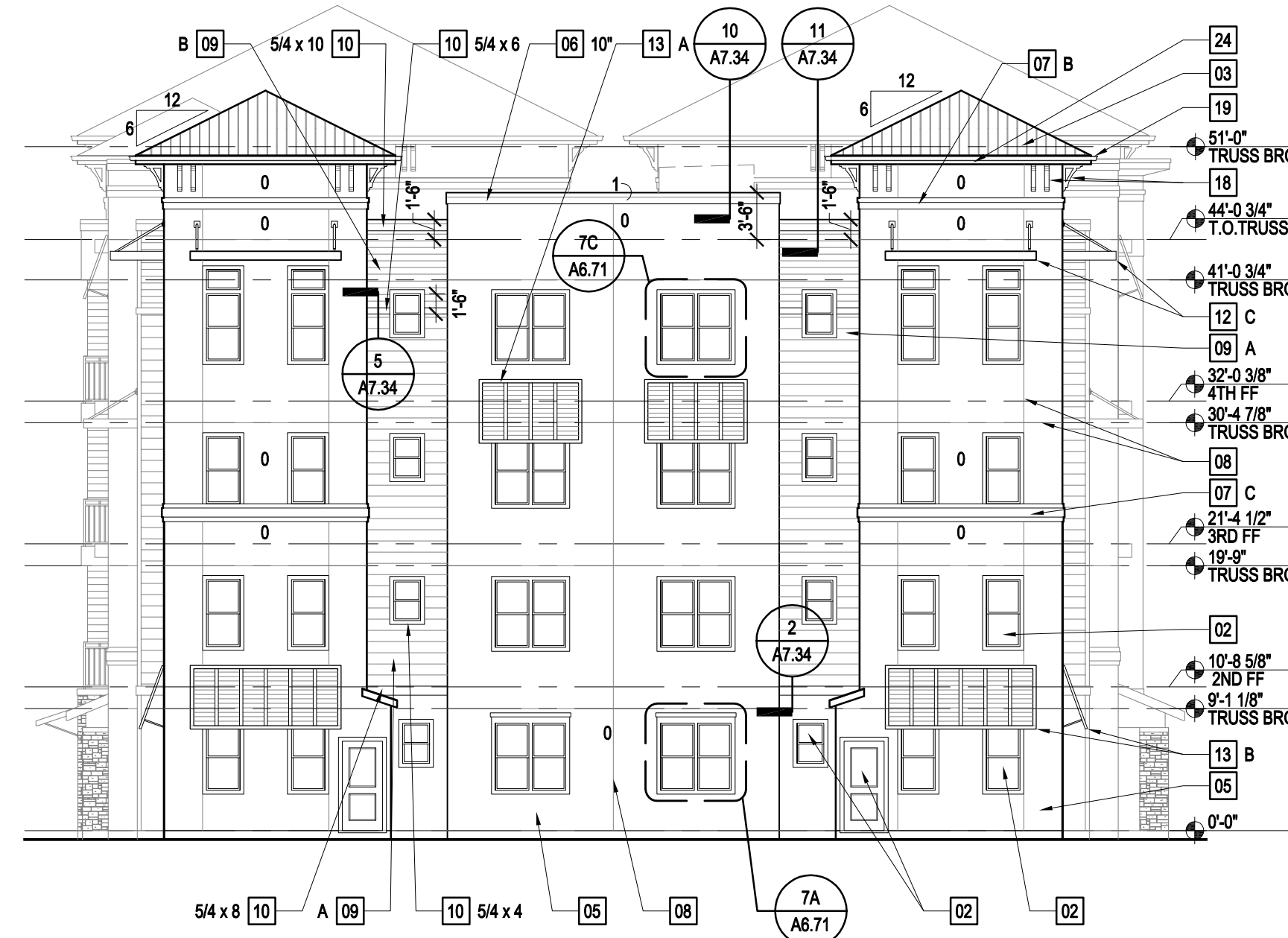


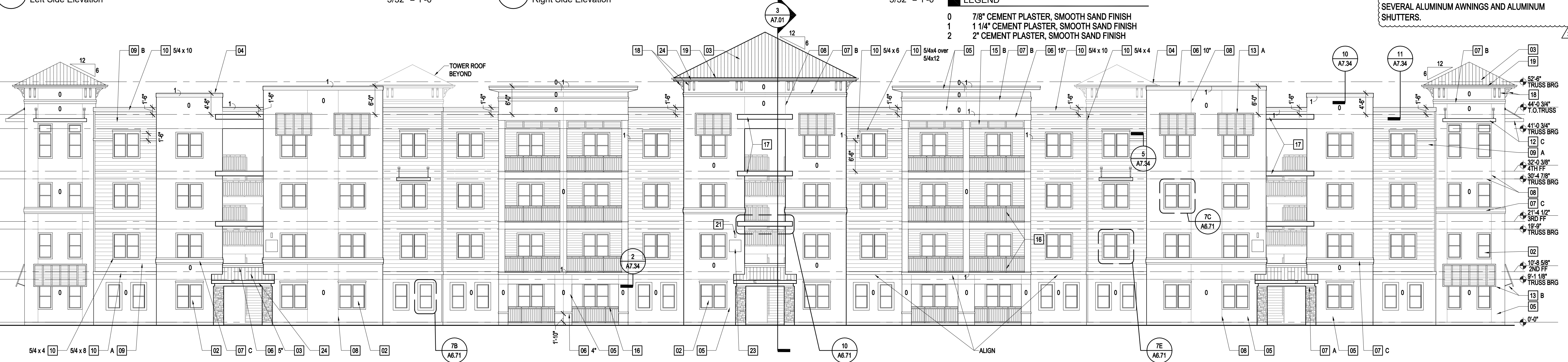
4 Side Elevation
Left Side Elevation

3/32" = 1'-0"



3 Side Elevation
Right Side Elevation

3/32" = 1'-0"



2 Rear Elevation
Parking Lot Side

3/32" = 1'-0"



1 Front Elevation
Street Side

3/32" = 1'-0"

KEY NOTES

- 17 PREFABRICATED POWDER COATED ALUMINUM DECORATIVE BEAM. SIZES AS INDICATED. GC TO COORDINATE AND PROVIDE BLOCKING FOR ALL CONNECTIONS AS REQUIRED PER MANUFACTURER/INSTALLER. SUBMIT SHOP DRAWINGS FOR ARCHITECT REVIEW AND COORDINATION OF WATER PENETRATION DETAILS. COLOR PER OWNER. GC TO PROVIDE ALTERNATE BID FOR CUSTOM COLOR. REFER TO DETAIL 10/A6.71
- 18 DECORATIVE BRACKET: SPECTIS BRACKET #BL2869 OR EQUAL. REFER TO DETAIL 5/A6.71
- 19 6" SEAMLESS ALUMINUM GUTTERS - COLOR PER OWNER
- 20 4"x5" SQUARE ALUMINUM DOWNSPOUTS - COLOR PER OWNER
- 21 LIGHT FIXTURE PER ELECTRICAL
- 22 ELECTRICAL METERS. COORDINATE WITH ELECTRICAL DRAWINGS FOR LOCATION, SIZE, AND CONFIGURATION
- 23 BUILDING SIGNAGE BY OWNER
- 24 2X8 ALUM. CLAD CONTINUOUS FASCIA W/ ALUMINUM DRIP EDGE. COLOR PER OWNER
- 25 FIBER CEMENT 1x3 BATTEN STRIP
- 26 6" V-GROOVE STAINED VERTICAL SIDING ON WALL OPPOSITE THE ELEVATOR AND ON CEILING. GROOVES ON WALL TO RUN IN VERTICAL DIRECTION. CEILING GROOVES TO RUN IN THE DIRECTION OF THE BREEZEWAY
- 27 WALL SCONCE LIGHT: BTM OF FIXTURE @ 6'-8" AFF
- 28 CONT BEAD OF SEALANT, W/ BACKER ROD IF NEEDED
- 29 TEXTURED GYPSUM BOARD PER ASSEMBLY

LEGEND

- 0 7/8" CEMENT PLASTER, SMOOTH SAND FINISH
- 1 1 1/4" CEMENT PLASTER, SMOOTH SAND FINISH
- 2 2" CEMENT PLASTER, SMOOTH SAND FINISH

KEY NOTES

- 12 PREFABRICATED POWDER COATED ALUMINUM AWNING WITH THE BACKS AND INTEGRAL GUTTER. GC TO COORDINATE AND PROVIDE BLOCKING FOR ALL CONNECTIONS AS REQUIRED PER MANUFACTURER/INSTALLER. SUBMIT SHOP DRAWINGS FOR ARCHITECT REVIEW AND COORDINATION OF WATER PENETRATION DETAILS. COLOR PER OWNER. GC TO PROVIDE ALTERNATE BID FOR CUSTOM COLOR. REFER TO DETAIL 1/A6.71
- 13 PREFABRICATED POWDER COATED SLOPED ALUMINUM BAHAMA SHUTTER WITH TIE BACKS. GC TO COORDINATE AND PROVIDE BLOCKING FOR ALL CONNECTIONS AS REQUIRED PER MANUFACTURER/INSTALLER. SUBMIT SHOP DRAWINGS FOR ARCHITECT REVIEW AND COORDINATION OF WATER PENETRATION DETAILS. COLOR PER OWNER. GC TO PROVIDE ALTERNATE BID FOR CUSTOM COLOR. REFER TO DETAIL 3/A6.71
- 14 PREFABRICATED POWDER COATED ALUMINUM AWNING WITH TIE BACKS. GC TO COORDINATE AND PROVIDE BLOCKING FOR ALL CONNECTIONS AS REQUIRED PER MANUFACTURER/INSTALLER. SUBMIT SHOP DRAWINGS FOR ARCHITECT REVIEW AND COORDINATION OF WATER PENETRATION DETAILS. COLOR PER OWNER. GC TO PROVIDE ALTERNATE BID FOR CUSTOM COLOR. REFER TO DETAIL 2/A6.71
- 15 PREFABRICATED POWDER COATED VERTICAL ALUMINUM BAHAMA SHUTTER. GC TO COORDINATE AND PROVIDE BLOCKING FOR ALL CONNECTIONS AS REQUIRED PER MANUFACTURER/INSTALLER. SUBMIT SHOP DRAWINGS FOR ARCHITECT REVIEW AND COORDINATION OF WATER PENETRATION DETAILS. COLOR PER OWNER. GC TO PROVIDE ALTERNATE BID FOR CUSTOM COLOR. REFER TO DETAIL 4/A6.71
- 16 ALUMINUM BALCONY RAILING: 42" HIGH GUARDRAIL VERTICAL PICKETS SPACED SUCH THAT A 4" SPHERE CANNOT PASS THROUGH THE GAPS. ALL ENDS ATTACHED TO WALL. POWDER COATED, COLOR PER OWNER

SHEET NOTES

- A REFER TO SHEET A1.03 FOR GENERAL NOTES
 - B REFER TO SHEETS A1.04 & A1.05 FOR CONSTRUCTION ASSEMBLIES
 - C REFER TO SHEET A9.11 & A9.21 FOR DOOR AND WINDOW DETAILS
 - D REFER TO SECTIONS FOR TRIM FLASHING DETAILS. CONTRACTOR TO COORDINATE ALL EXTERIOR BUILDING LIGHTING AND SIGNAGE WITH ELECTRICAL DRAWINGS AND LOCAL REQUIREMENTS. REFER TO ELECTRICAL DRAWINGS FOR DETAILS.
- KEY NOTES**
- 01 STONE VENEER
 - 02 DOORS & WINDOWS PER SCHEDULES
 - 03 STANDING SEAM METAL ROOF SYSTEM PER ASSEMBLY
 - 04 PARAPET CAP
 - 05 CEMENT PLASTER FINISH PER ASSEMBLY
 - 06 CEMENT PLASTER TRIM BAND
 - 07 HARD COAT FOAM TRIM BAND WITH SMOOTH FINISH. REFER TO DETAIL 6/A6.71
 - 08 CONTROL JOINT - TYPICAL
 - 09 FIBER CEMENT HORIZONTAL SIDING:
 - A: 10" EXPOSURE
 - B: 6" EXPOSURE
 - 10 5/4" FIBER CEMENT TRIM, SIZE AS INDICATED
 - 11 FIBER CEMENT PANEL

PARAPET HEIGHTS HAVE BEEN REVISED. REMOVED SEVERAL ALUMINUM AWNINGS AND ALUMINUM SHUTTERS.

10/04/2017

James B. Black
AR0011224

SET DISTRIBUTIONS:

03/31/17	50% Progress Set
05/26/17	Perm Set

SHEET REVISIONS:

09/19/17	3	VE Revision
----------	---	-------------

EDITED BY:
PROJECT NO. 16-3458

Building Type I
Exterior Elevations

© FORUM ARCHITECTURE & INTERIOR DESIGN, INC. These documents and their contents are the property of Forum Architecture & Interior Design, Inc. and are issued only for the specific project noted on these drawings. Any reproductions, revisions, or modifications of these documents without the expressed written consent of Forum Architecture & Interior Design, Inc. is prohibited by law.