

03/31/17	50% Progress Set
05/26/17	Permit Set

09/19/17	3	VE Revision
----------	---	-------------

**SHEET NOTES**

- A REFER TO SHEET A1.03 FOR GENERAL NOTES
- B REFER TO SHEETS A1.04 & A1.05 FOR CONSTRUCTION ASSEMBLIES
- C REFER TO SHEET A9.11 & A9.21 FOR DOOR AND WINDOW DETAILS
- D REFER TO SECTIONS FOR TRIM FLASHING DETAILS & CONTRACTOR TO COORDINATE ALL EXTERIOR BUILDING LIGHTING AND SIGNAGE WITH ELECTRICAL DRAWINGS AND LOCAL REQUIREMENTS. REFER TO ELECTRICAL DRAWINGS FOR DETAILS.

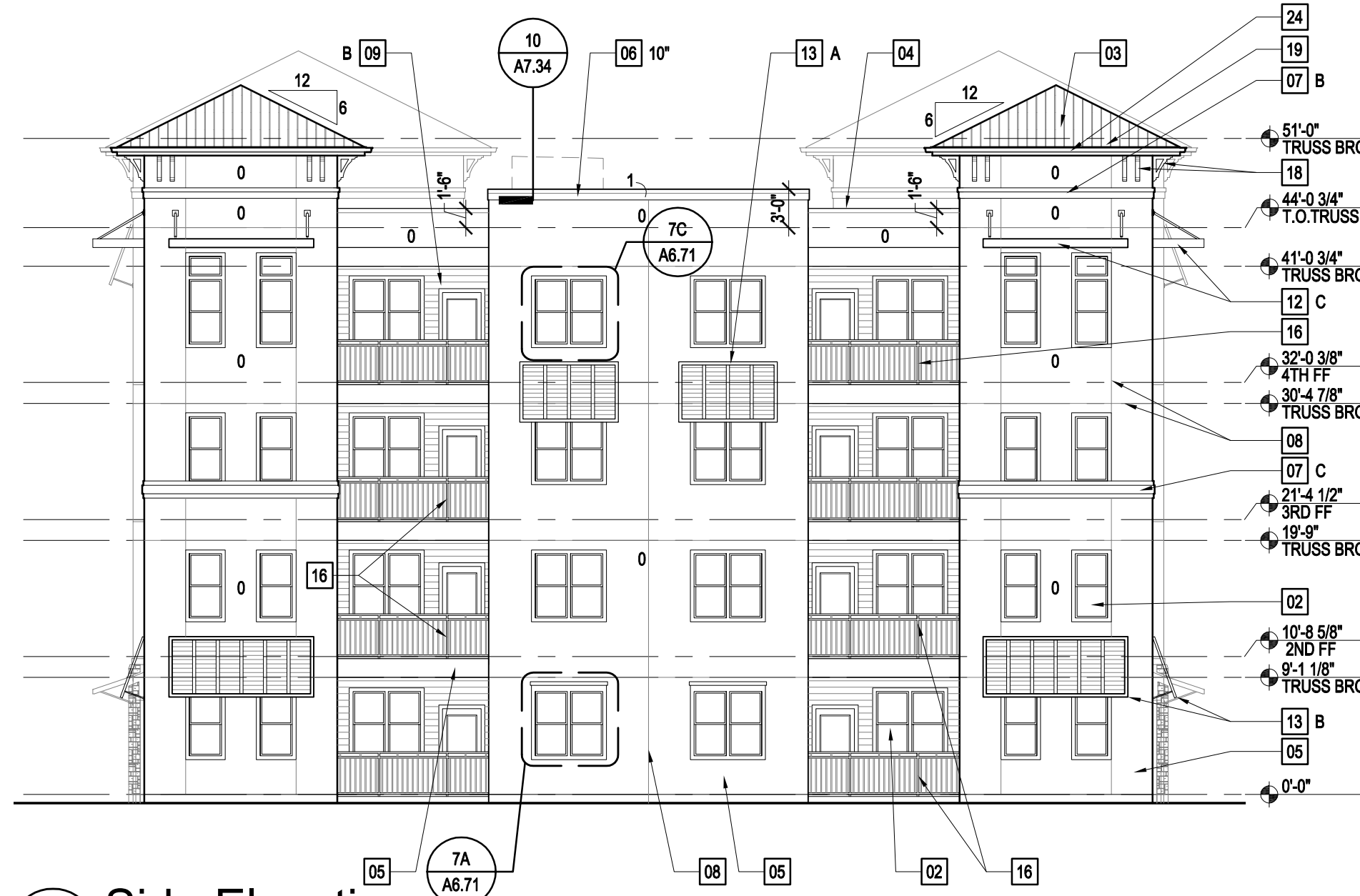
**KEY NOTES**

- 01 STONE VENEER
- 02 DOORS & WINDOWS PER SCHEDULES
- 03 STANDING SEAM METAL ROOF SYSTEM PER ASSEMBLY
- 04 PARAPET CAP
- 05 CEMENT PLASTER FINISH PER ASSEMBLY
- 06 CEMENT PLASTER TRIM BAND
- 07 HARD COAT FOAM TRIM BAND WITH SMOOTH FINISH, REFER TO DETAIL 6/A6.71
- 08 CONTROL JOINT - TYPICAL
- 09 FIBER CEMENT HORIZONTAL SIDING:
  - A: 10" EXPOSURE
  - B: 6" EXPOSURE
- 10 5/4 FIBER CEMENT TRIM, SIZE AS INDICATED
- 11 FIBER CEMENT PANEL
- 12 PREFABRICATED POWDER COATED ALUMINUM AWNING WITH TIE BACKS AND INTEGRAL GUTTER. GC TO COORDINATE AND PROVIDE BLOCKING FOR ALL CONNECTIONS AS REQUIRED PER MANUFACTURER/INSTALLER. SUBMIT SHOP DRAWINGS FOR ARCHITECT REVIEW AND COORDINATION OF WATER PENETRATION DETAILS. COLOR PER OWNER, GC TO PROVIDE ALTERNATE BID FOR CUSTOM COLOR. REFER TO DETAIL 1/A6.71
- 13 PREFABRICATED POWDER COATED SLOPED ALUMINUM BAHAMA SHUTTER WITH TIE BACKS. GC TO COORDINATE AND PROVIDE BLOCKING FOR ALL CONNECTIONS AS REQUIRED PER MANUFACTURER/INSTALLER. SUBMIT SHOP DRAWINGS FOR ARCHITECT REVIEW AND COORDINATION OF WATER PENETRATION DETAILS. COLOR PER OWNER, GC TO PROVIDE ALTERNATE BID FOR CUSTOM COLOR. REFER TO DETAIL 3/A6.71
- 14 PREFABRICATED POWDER COATED ALUMINUM AWNING WITH TIE BACKS. GC TO COORDINATE AND PROVIDE BLOCKING FOR ALL CONNECTIONS AS REQUIRED PER MANUFACTURER/INSTALLER. SUBMIT SHOP DRAWINGS FOR ARCHITECT REVIEW AND COORDINATION OF WATER PENETRATION DETAILS. COLOR PER OWNER, GC TO PROVIDE ALTERNATE BID FOR CUSTOM COLOR. REFER TO DETAIL 2/A6.71
- 15 PREFABRICATED POWDER COATED VERTICAL ALUMINUM BAHAMA SHUTTER. GC TO COORDINATE AND PROVIDE BLOCKING FOR ALL CONNECTIONS AS REQUIRED PER MANUFACTURER/INSTALLER. SUBMIT SHOP DRAWINGS FOR ARCHITECT REVIEW AND COORDINATION OF WATER PENETRATION DETAILS. COLOR PER OWNER, GC TO PROVIDE ALTERNATE BID FOR CUSTOM COLOR. REFER TO DETAIL 4/A6.71
- 16 ALUMINUM BALCONY RAILING: 42" HIGH GUARDRAIL VERTICAL PICKETS SPACED SUCH THAT A 4" SPHERE CANNOT PASS THROUGH THE GAPS. ALL ENDS ATTACHED TO WALL. POWDER COATED, COLOR PER OWNER
- 17 PREFABRICATED POWDER COATED ALUMINUM DECORATIVE BEAM, SIZES AS INDICATED. GC TO COORDINATE AND PROVIDE BLOCKING FOR ALL CONNECTIONS AS REQUIRED PER MANUFACTURER/INSTALLER. SUBMIT SHOP DRAWINGS FOR ARCHITECT REVIEW AND COORDINATION OF WATER PENETRATION DETAILS. COLOR PER OWNER, GC TO PROVIDE ALTERNATE BID FOR CUSTOM COLOR. REFER TO DETAIL 10/A6.71
- 18 DECORATIVE BRACKET: SPECTIS BRACKET #BL2869 OR EQUAL. REFER TO DETAIL 5/A6.71
- 19 6" SEAMLESS ALUMINUM GUTTERS - COLOR PER OWNER
- 20 4"x5" SQUARE ALUMINUM DOWNSPOUTS - COLOR PER OWNER
- 21 LIGHT FIXTURE PER ELECTRICAL
- 22 ELECTRICAL METERS. COORDINATE WITH ELECTRICAL DRAWINGS FOR LOCATION, SIZE, AND CONFIGURATION
- 23 BUILDING SIGNAGE BY OWNER
- 24 2X8 ALUM. CLAD CONTINUOUS FASCIA W/ ALUMINUM DRIP EDGE. COLOR PER OWNER
- 25 FIBER CEMENT 1x3 BATTEN STRIP
- 26 6" V-GROOVE STAINED VERTICAL SIDING ON WALL OPPOSITE THE ELEVATOR AND ON CEILING. GROOVES ON WALL TO RUN IN VERTICAL DIRECTION. CEILING GROOVES TO RUN IN THE DIRECTION OF THE BREEZEWAY
- 27 WALL SCONCE LIGHT: BTM OF FIXTURE @ 6'-8" AFF
- 28 CONT BEAD OF SEALANT, W/ BACKER ROD IF NEEDED
- 29 TEXTURED GYPSUM BOARD PER ASSEMBLY

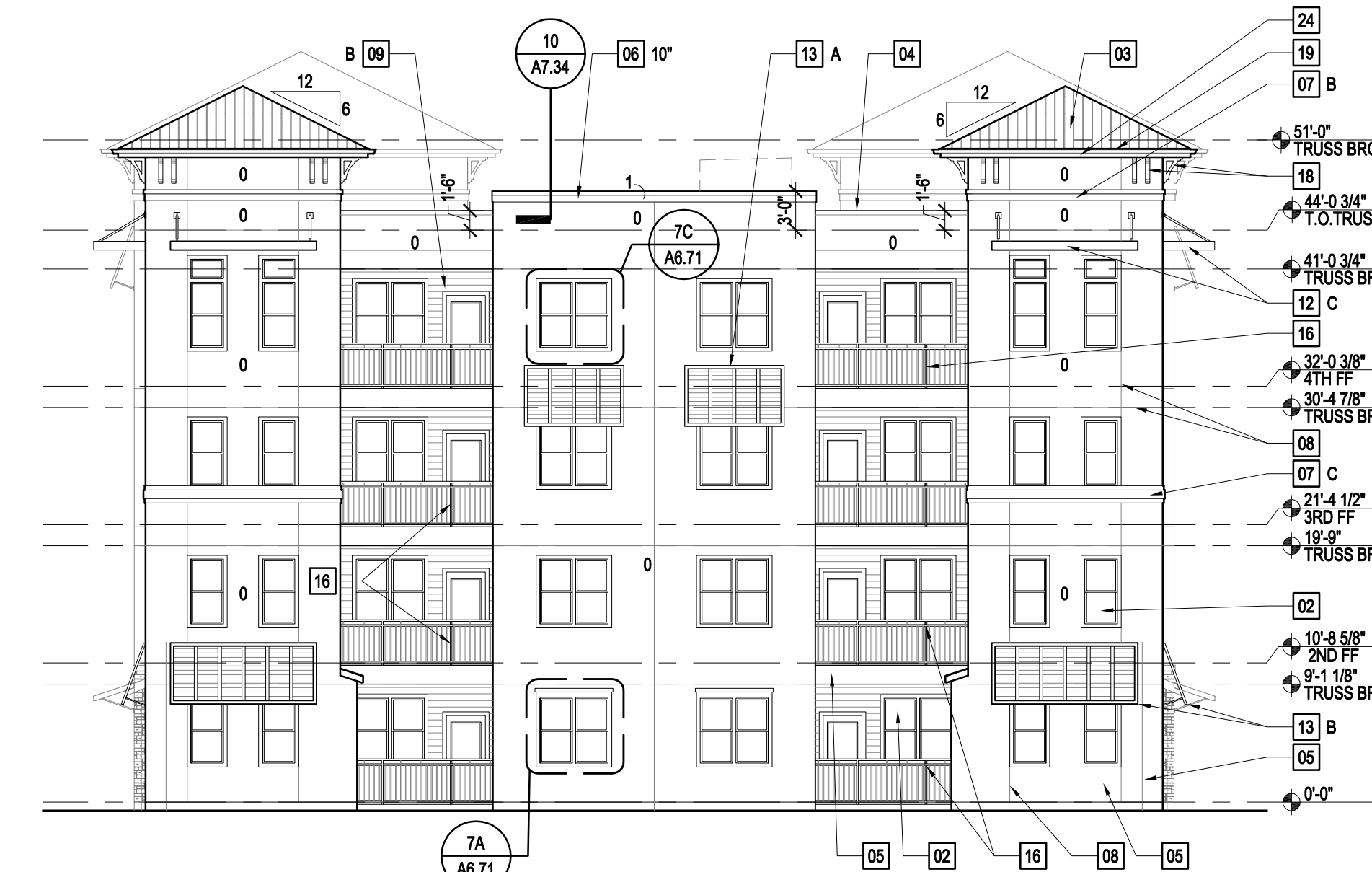
**LEGEND**

- 0 7/8" CEMENT PLASTER, SMOOTH SAND FINISH
- 1 1 1/4" CEMENT PLASTER, SMOOTH SAND FINISH
- 2 2" CEMENT PLASTER, SMOOTH SAND FINISH

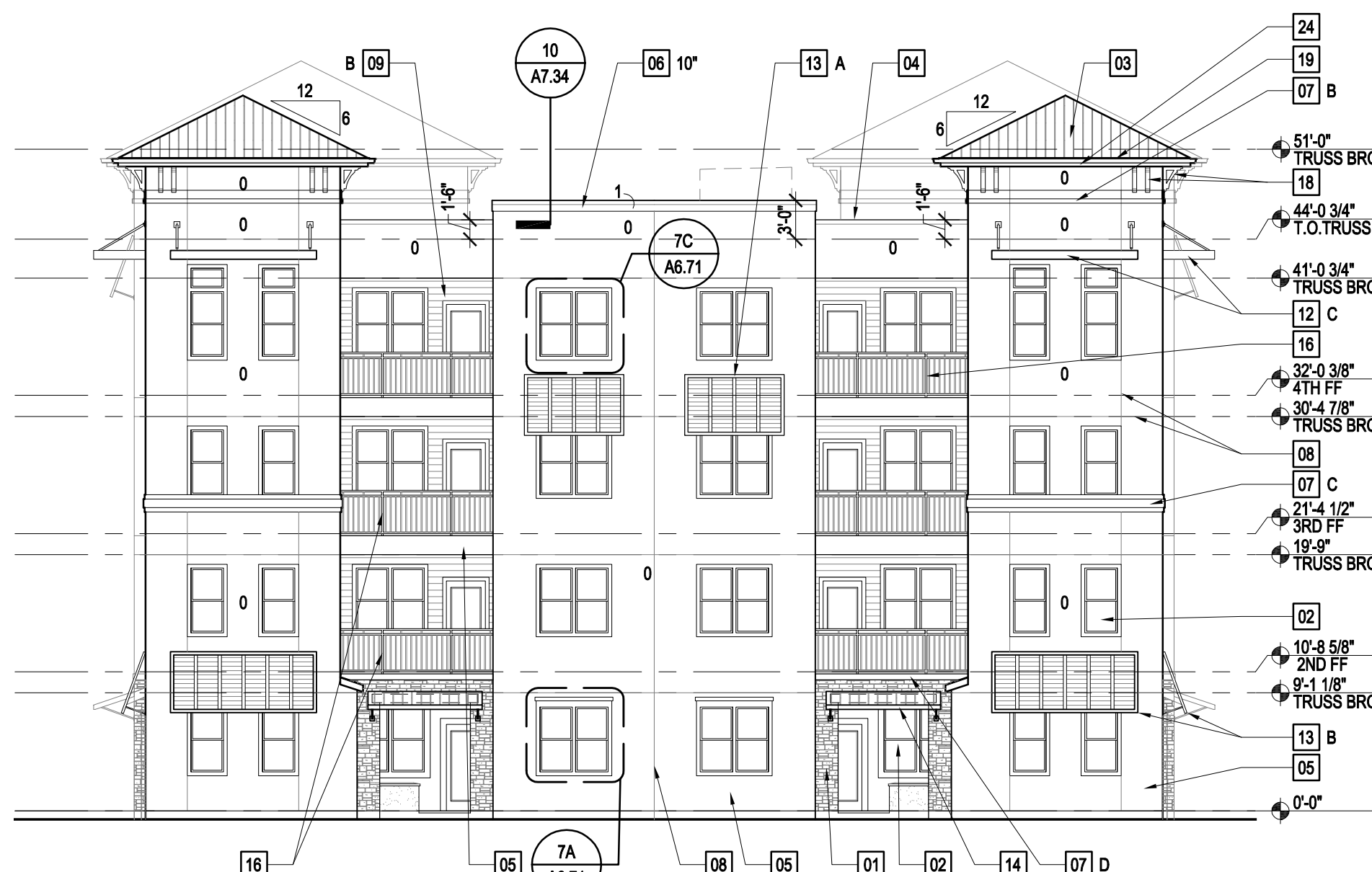
PARAPET HEIGHTS HAVE BEEN REVISED. REMOVED SEVERAL ALUMINUM AWNINGS AND ALUMINUM SHUTTERS.



**3 Side Elevation**  
Left Side Elevation 3/32" = 1'-0"



**2 Side Elevation**  
Right Side Elevation @ Bldg. #5 3/32" = 1'-0"



**1 Side Elevation**  
Right Side Elevation @ Bldg. #2 3/32" = 1'-0"